

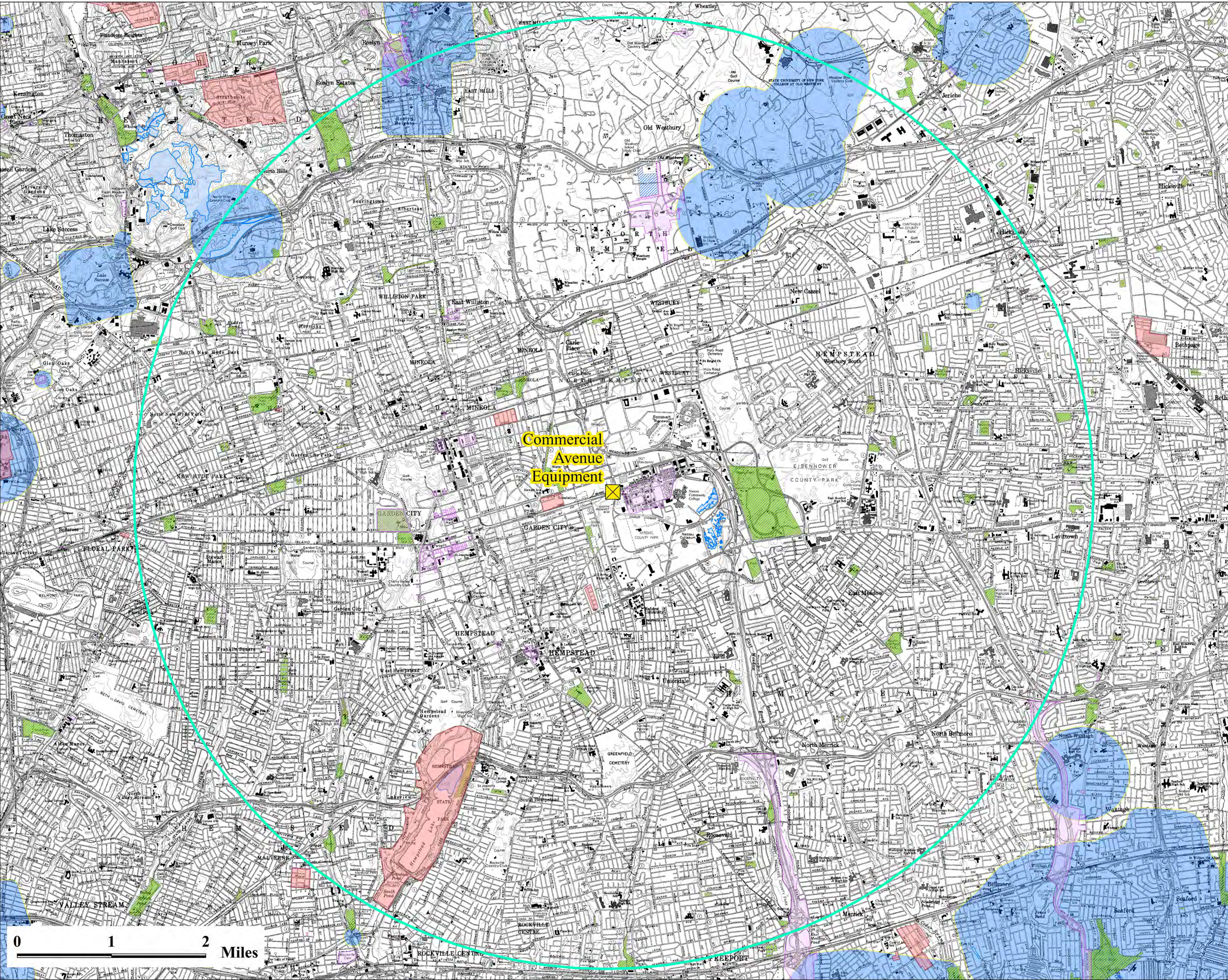
PSEG LONG ISLAND LLC
On Behalf of and as Agent for
THE LONG ISLAND LIGHTING COMPANY d/b/a LIPA

Commercial Avenue Equipment Project

Appendix A
Project Figures

Figure A-1

NYSDOT 1:24,000 Topographic Map



- LEGEND
- Commercial Avenue Equipment
 - Five Mile Buffer of Proposed Area of Disturbance
 - NYS Natural Heritage Communities
 - Local Park
 - State Recreation Area
 - State Conservation Area
 - National Register Building Listings
 - NYS CRIS Eligible Building Historic District
 - Archaeological Buffer Area

No permanent clearing anticipated.

- Sources:
1. Project details prepared by Burns & McDonnell, January 2025
 2. NYSDOT 1:24k Topographic Quad Maps, Accessed January 2025
 3. NY GIS Clearinghouse: NY CRIS Buildings and Archeological Buffer Areas (2025), National Register Buildings (2025), NYS Natural Heritage Communities (2024)
 4. NYPAD (2024): Local Park/State Recreation Area/State Conservation Area



PROJECT TITLE



Commercial Avenue
Equipment Project

SHEET TITLE

Figure A-1
NYSDOT 1:24,000
Topographic Map

DATE 04/11/2025
DRN. BY CR/MK
CHK. BY SH

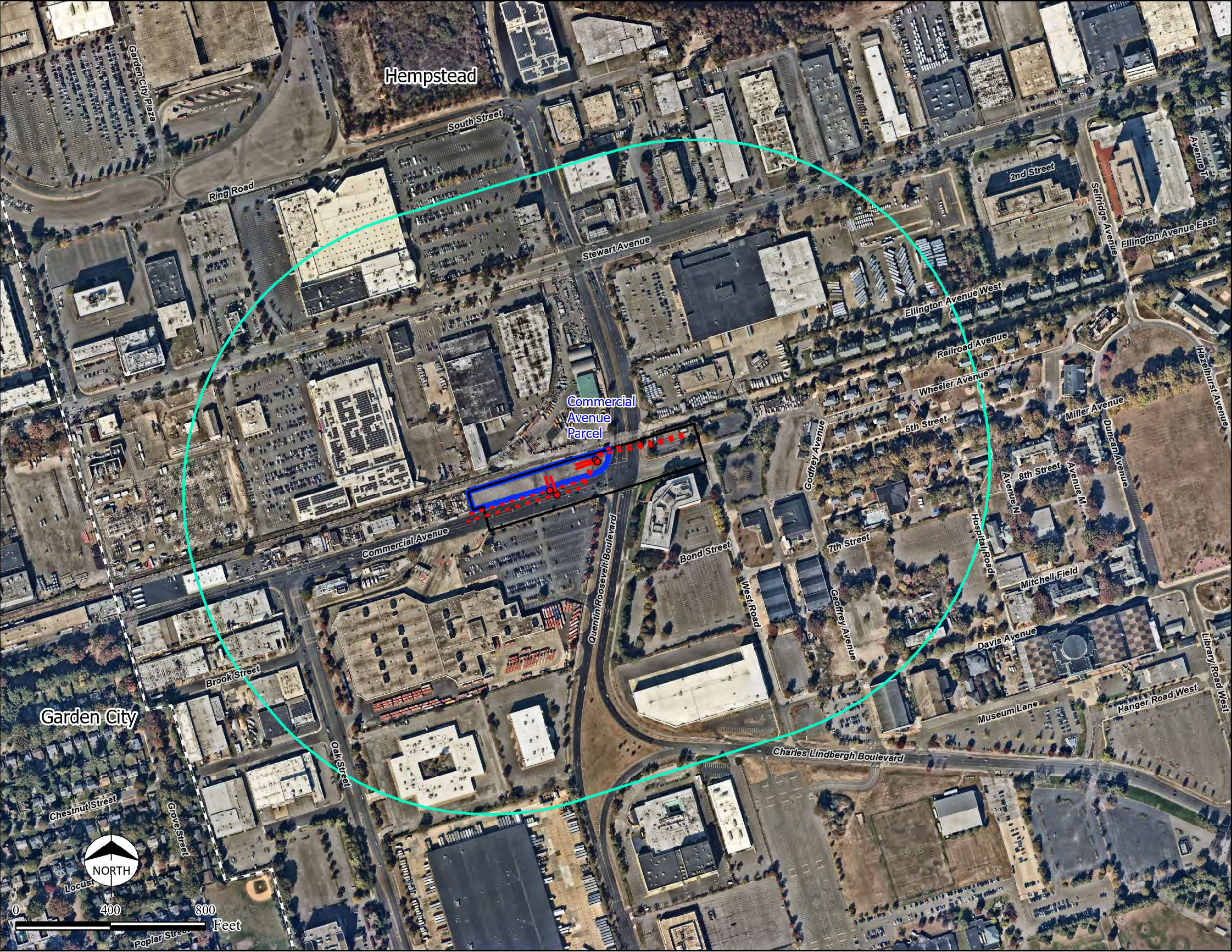


FIGURE NO. A-1

PRELIMINARY - NOT FOR CONSTRUCTION

Figure A-2

Aerial Imagery



LEGEND

- Approximate Splice Vault Location
- - - Existing Line
- Interconnection Line
- ▭ Proposed Area of Disturbance
- 1,200 Foot Buffer of Proposed Area of Disturbance
- ▭ Parcel

Sources:
1. Project details prepared by Burns & McDonnell, January 2025.
2. NYS GIS Data Clearinghouse
3. Nearmap US Vertical Imagery, October 2024



PROJECT TITLE

PSEG | LONG ISLAND

Commercial Avenue
Equipment Project

SHEET TITLE

Figure A-2
Aerial Imagery

SCALE 1" = 400' (Printed on 11"x17")

DATE	04/11/2025
DRN. BY	CR/MK
CHK. BY	SH

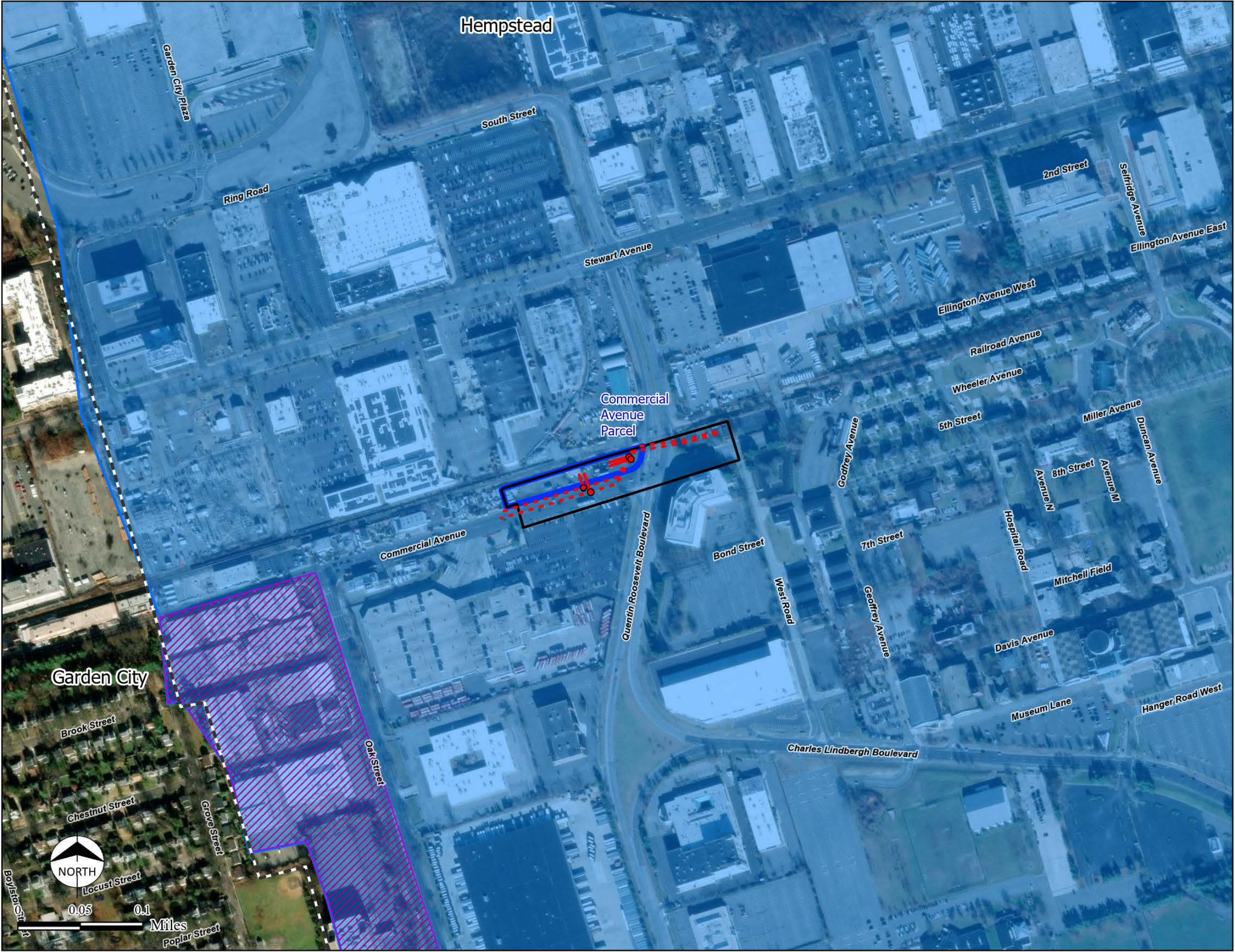
FIGURE NO. A-2

**BURNS
MCDONNELL**

PRELIMINARY - NOT FOR CONSTRUCTION

Figure A-3

PEJA and DAC Crossed by the Project



LEGEND

- Approximate Splice Vault Location
- - - Existing Line
- Interconnection Line
- ▭ Proposed Area of Disturbance
- ▭ Parcel
- - - Town/Village Boundary
- ▨ Potential Environmental Justice Area (PEJA) Community
- ▭ Disadvantaged Community (DAC)

Sources:

1. Project details prepared by Burns & McDonnell, January 2025
2. NYSDEC PEJA, June 2022
3. NYSERDA DAC, March 2023
4. NYS GIS Data Clearinghouse
5. Esri World Imagery



PROJECT TITLE

PSEG | LONG ISLAND

Commercial Avenue
Equipment Project

SHEET TITLE

Figure A-3
PEJA and DAC
Crossed by the Project

SCALE 1" = 400' (Printed on 11"x17")

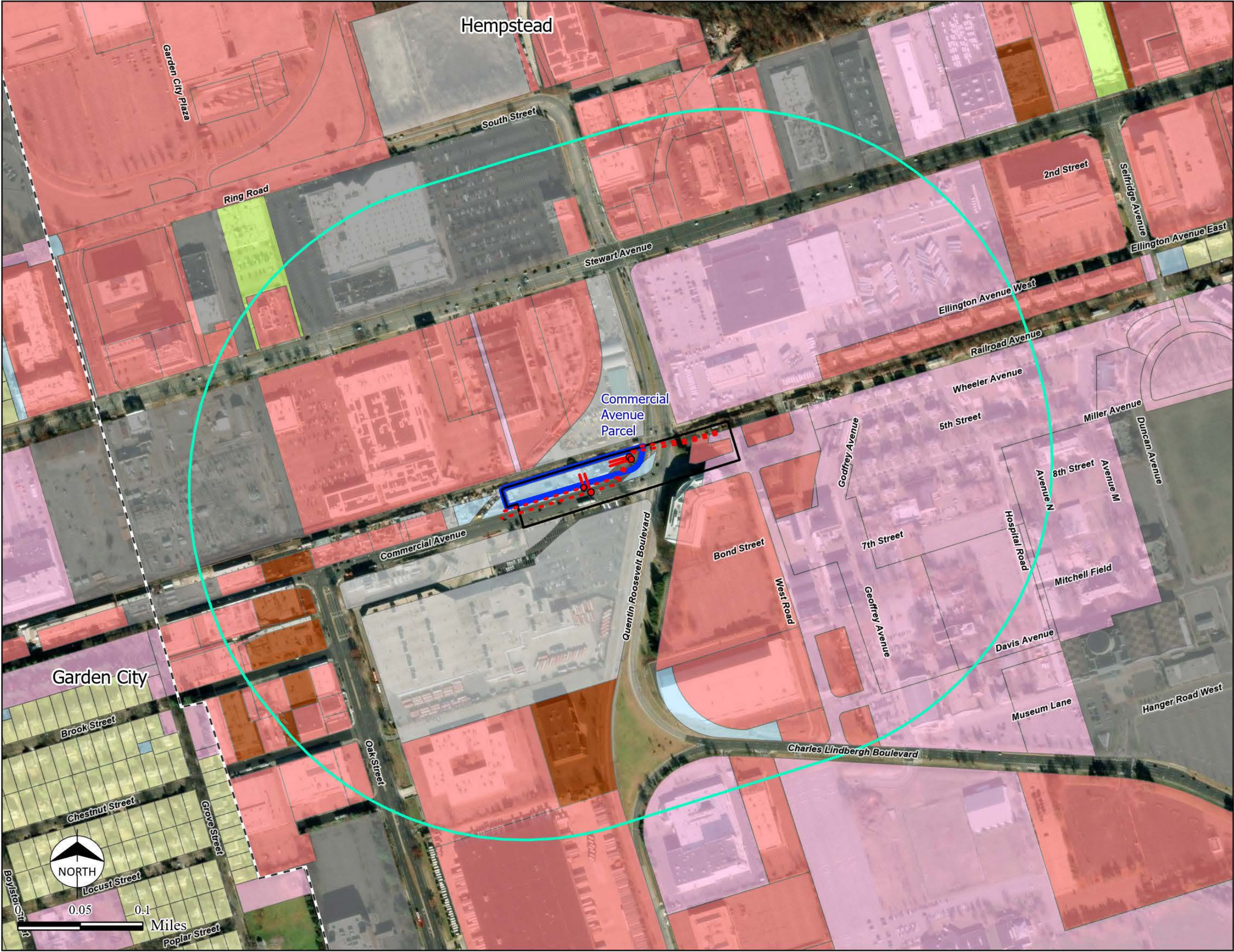
DATE	04/11/2025	BURNS MCDONNELL
DRN. BY	CR/MK	
CHK. BY	SH	

FIGURE NO. A-3

PRELIMINARY - NOT FOR CONSTRUCTION

Figure A-4

Land Use Within One Quarter Mile of the Project



LEGEND

- Approximate Splice Vault Location
- Existing Line
- Interconnection Line
- ▭ Proposed Area of Disturbance
- ▭ Quarter Mile Buffer of Proposed Area of Disturbance
- ▭ Parcel
- - - Town/Village Boundary

NYS ORPS Land Classification

- Residential
- Vacant Land
- Commercial
- Recreation and Entertainment
- Community Services
- Industrial
- Public Services
- No Data

Sources:

1. Project details prepared by Burns & McDonnell, January 2025
2. Regrid Parcel Data with NYS ORPS Property Type Classification Codes, December 2024
3. Esri World Imagery



PROJECT TITLE

PSEG | LONG ISLAND

Commercial Avenue Equipment Project

SHEET TITLE

Figure A-4
Land Use Within One Quarter Mile of the Project

SCALE 1" = 400' (Printed on 11"x17")

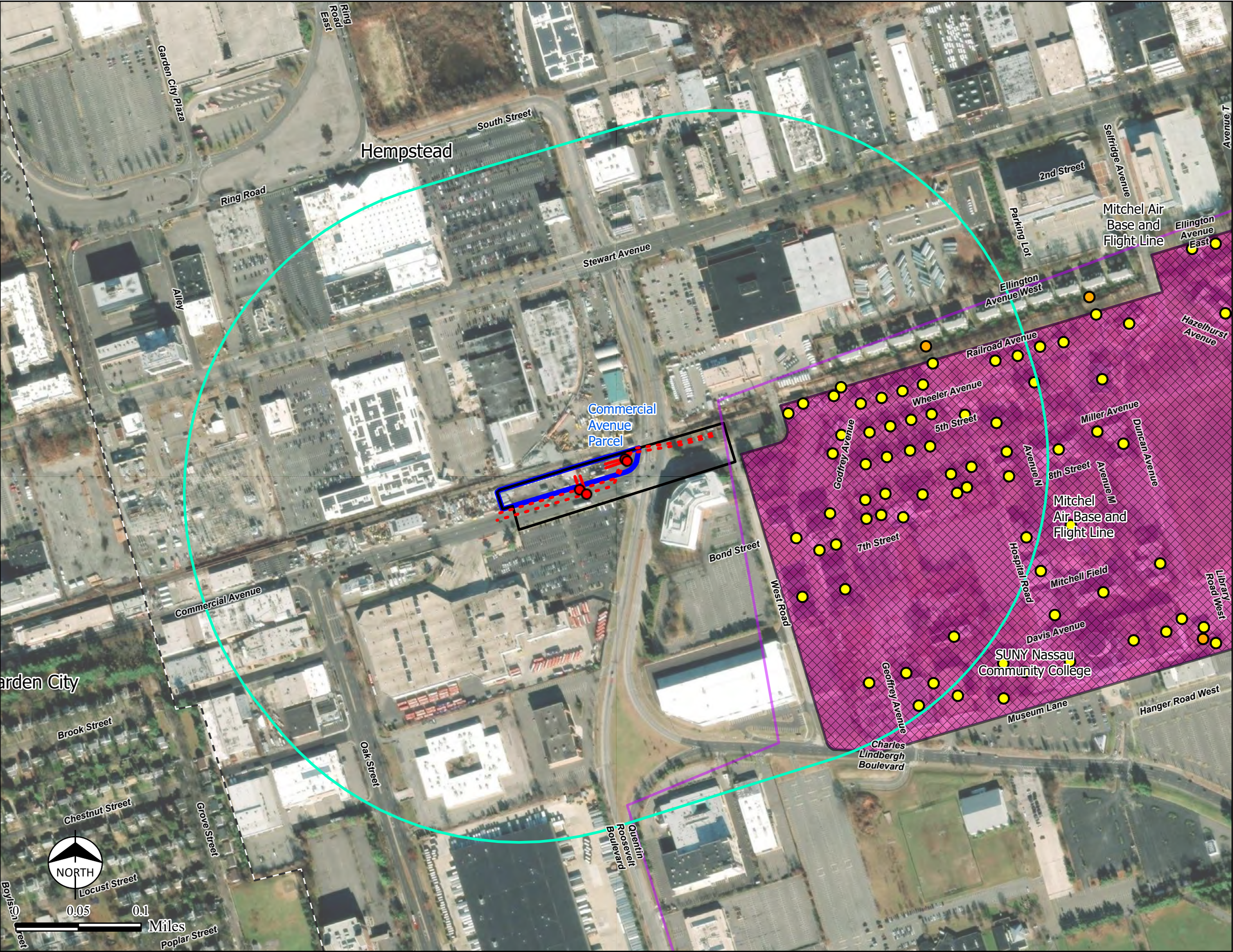
DATE	04/11/2025	BURNS MCDONNELL
DRN. BY	CR/MK	
CHK. BY	SH	

FIGURE NO. A-4

PRELIMINARY - NOT FOR CONSTRUCTION

Figure A-5

Cultural Resources Within a Quarter Mile of the Project



LEGEND

- 1/4 Mile Buffer of Proposed Area of Disturbance
- Approximate Splice Vault
- Interconnection Line
- Existing Line
- Parcel
- Proposed Area of Disturbance
- Town/Village Boundary
- National Register Building Listings
- Listed Building District
- Undetermined Building District
- Listed Building
- Undetermined Building

Sources:
1. Prepared details prepared by Burns & McDonnell, January 2025.
2. Division for Historic Preservation, New York State Office of Parks, Recreation and Historic Preservation - Building Points, Building Districts, National Register Building Listings, and Archaeological Buffer Areas, 01/2025
3. ESRI World Imagery, January 2025.



PROJECT TITLE

PSEG | LONG ISLAND

**Commercial Avenue
Equipment Project**

SHEET TITLE

**Figure A-5
Cultural Resources Within a
Quarter Mile of the Project**

SCALE 1" = 400' (Printed on 11"x17")

DATE 4/10/2025

DRN. BY: DO

CHK. BY: KB

FIGURE NO. A-5 Page 1 of 1

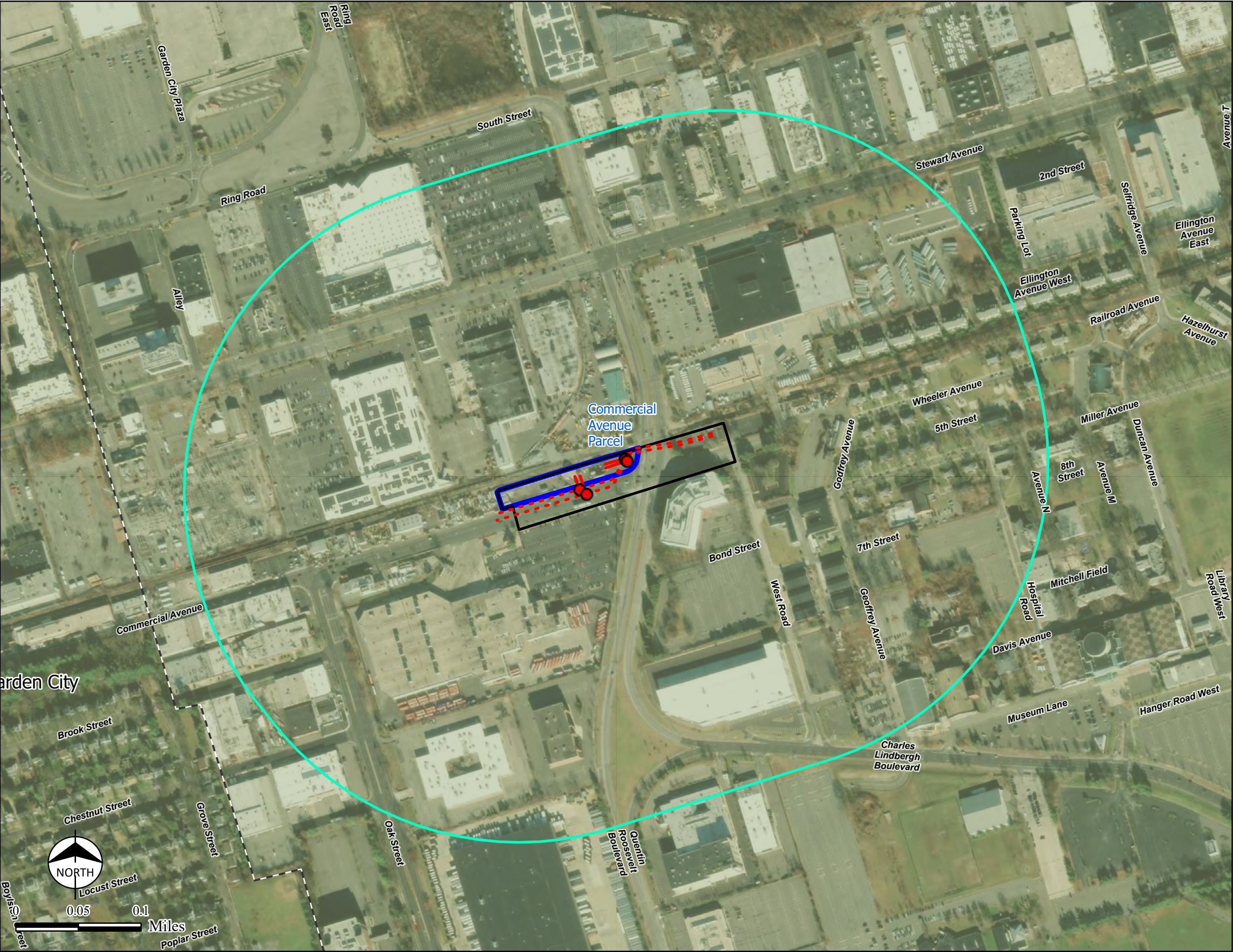
**BURNS
MCDONNELL**

PS&S

PRELIMINARY - NOT FOR CONSTRUCTION

Figure A-6

Depth to Bedrock



LEGEND

1/4 Mile Buffer of Proposed Area of Disturbance

Approximate Splice Vault

Interconnection Line

Existing Line

Proposed Area of Disturbance

Parcel

Town/Village Boundary

Depth to Bedrock

> 2000'

Sources:

1. Prepared details prepared by Burns & McDonnell, January 2025.
2. NYS Geologic Survey, Lower Hudson Bedrock, 1995
3. ESRI World Imagery, January 2025.



PROJECT TITLE

PSEG | LONG ISLAND

Commercial Avenue
Equipment Project

SHEET TITLE

Figure A-6
Depth to Bedrock

SCALE 1" = 400' (Printed on 11"x17")

DATE 4/10/2025

DRN. BY: DO

CHK. BY: KB

FIGURE NO. A-6 Page 1 of 1

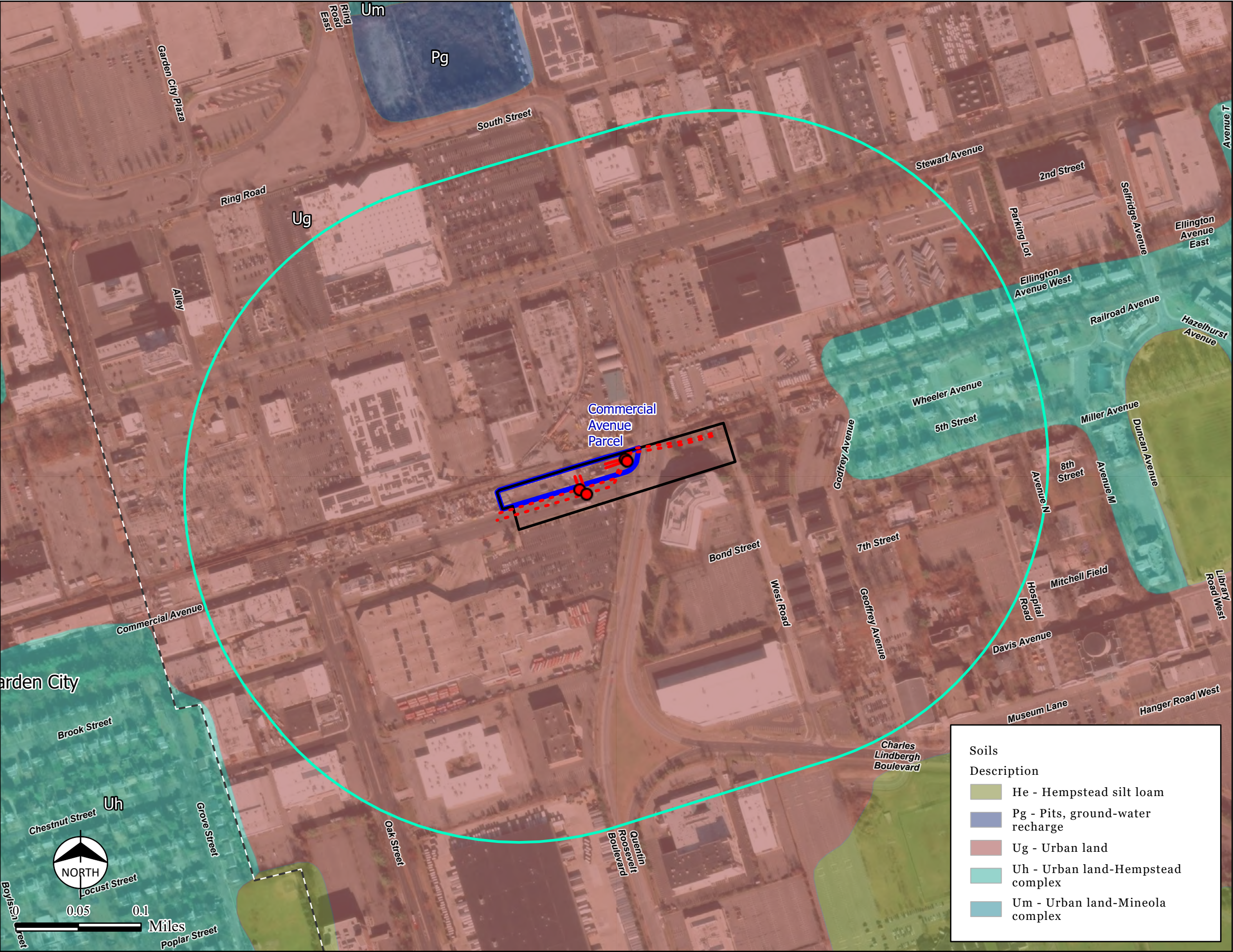
**BURNS
MCDONNELL**

PS&S

PRELIMINARY - NOT FOR CONSTRUCTION

Figure A-7

Soils Crossed by the Project



LEGEND

- 1/4 Mile Buffer of Proposed Area of Disturbance
- Approximate Splice Vault
- Interconnection Line
- Existing Line
- Parcel
- Proposed Area of Disturbance
- Town/Village Boundary

Sources:
1. Prepared details prepared by Burns & McDonnell, January 2025.
2. Soil Survey Geographic (SSURGO) database for Nassau & Suffolk County, New York, 2020
3. ESRI World Imagery, January 2025.



PROJECT TITLE



Commercial Avenue
Equipment Project

SHEET TITLE

Figure A-7
Soils Crossed
by the Project

SCALE 1" = 400' (Printed on 11"x17")

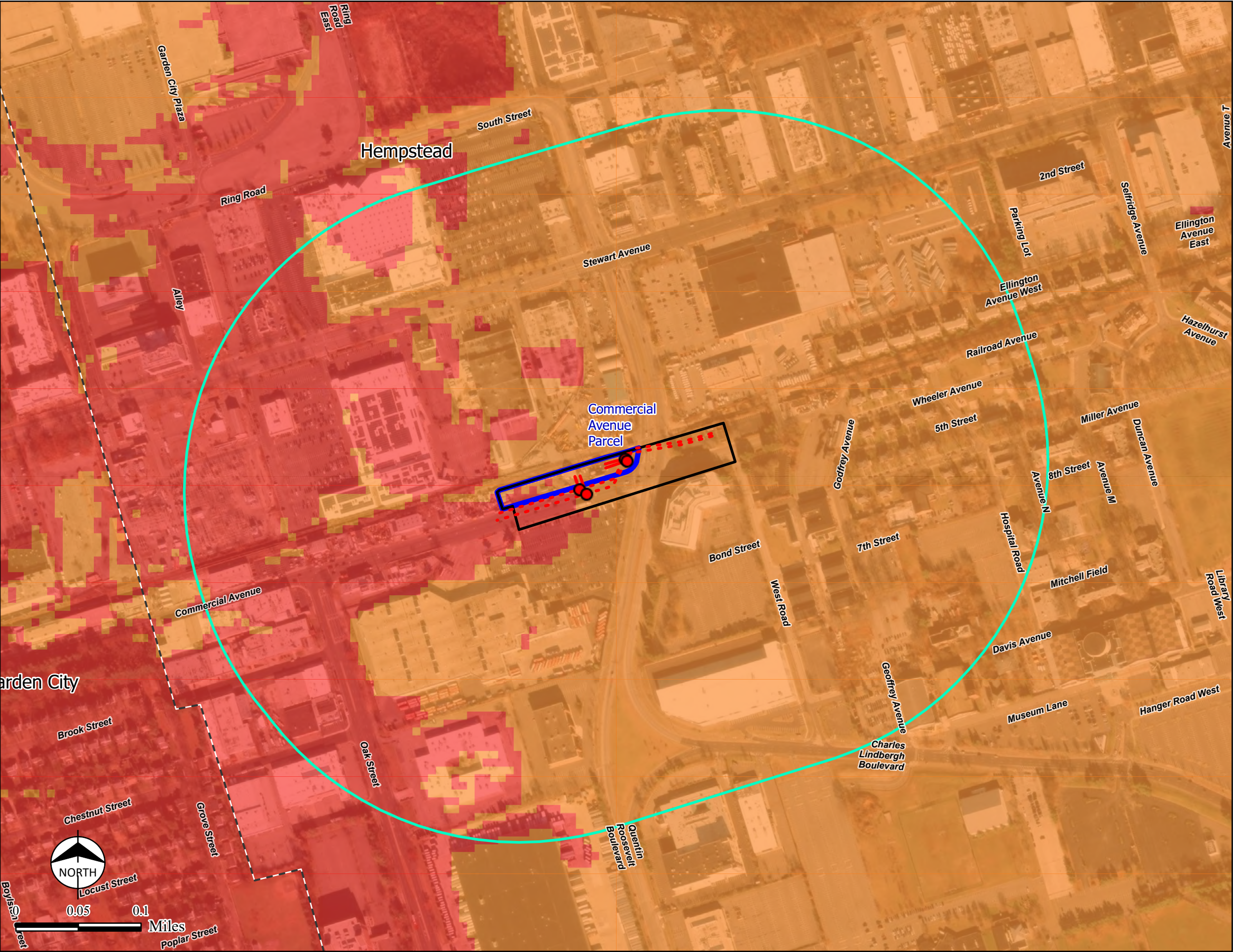
DATE 4/10/2025
DRN. BY: DO
CHK. BY: KB
FIGURE NO. A-7 Page 1 of 1



PRELIMINARY - NOT FOR CONSTRUCTION

Figure A-8

Depth to Groundwater



ESRI, METI/NASA, NGA, USGS, US Census Bureau, FEMA, TomTom, Garmin, FAO, NOAA, EPA, NPS, USFWS, SafeGraph, GeoTechnologies, Inc

LEGEND

1/4 Mile Buffer of Proposed Area of Disturbance

Approximate Splice Vault

Interconnection Line

Existing Line

Parcel

Proposed Area of Disturbance

Town/Village Boundary

Depth to Groundwater

Feet Below Surface

0 - 25

25 - 50

50 - 75

Notes:

1. There are no Special Groundwater Protection Areas within the map extent.

Sources:

1. Prepared details prepared by Burns & McDonnell, January 2025.

2. USGS Depth to Groundwater on Long Island, New York, 05/2016

3. NYSDEC CEA Special Groundwater Protection Areas, 2024

4. ESRI World Imagery, January 2025.



PROJECT TITLE

PSEG

LONG ISLAND

Commercial Avenue Equipment Project

SHEET TITLE

Figure A-8

Depth to Groundwater

SCALE 1" = 400' (Printed on 11"x17")

DATE

4/10/2025

DRN. BY: DO

CHK. BY: KB

FIGURE NO. A-8

Page 1 of 1

BURNS

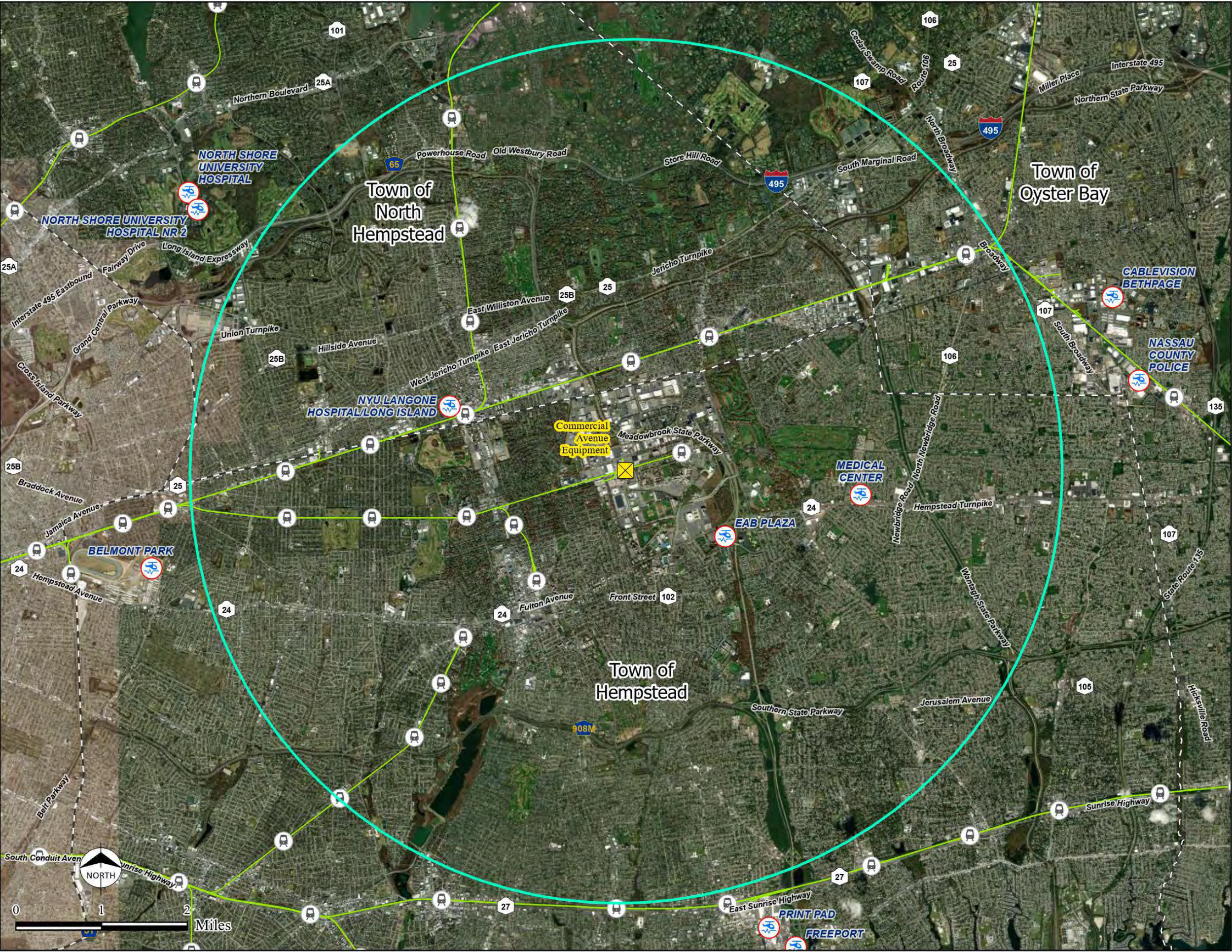
MCDONNELL

PS&S

PRELIMINARY - NOT FOR CONSTRUCTION

Figure A-9

Effect on Transportation



LEGEND

- Commercial Avenue Equipment
- Five Mile Buffer of Proposed Area of Disturbance
- Town Boundary
- Long Island Railroad (LIRR)
- Rail Station
- Heliport

Sources:

- Project details prepared by Burns & McDonnell, January 2025
- HIFLD, Aviation Facilities/Ferry Terminals/Railroads, Accessed February 2025
- NYS GIS Data Clearinghouse
- Esri World Imagery

PROJECT TITLE

PSEG | LONG ISLAND

Commercial Avenue
Equipment Project

SHEET TITLE

Figure A-9
Effect on Transportation

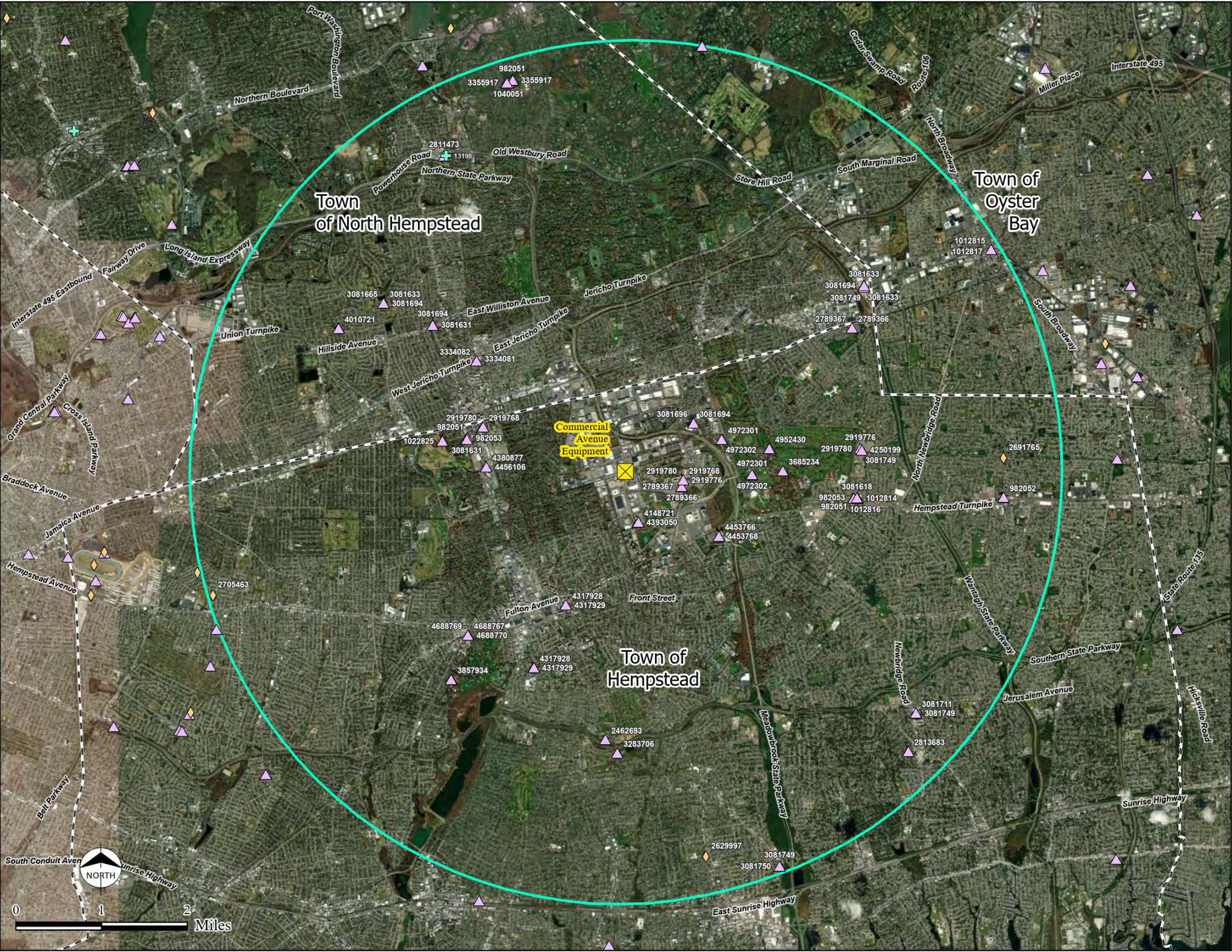
DATE	04/11/2025	
DRN. BY	CR/MK	
CHK. BY	SH	

FIGURE NO. A-9

PRELIMINARY - NOT FOR CONSTRUCTION

Figure A-10

Effect on Communication



LEGEND

- Commercial Avenue Equipment
- Five Mile Buffer of Proposed Area of Disturbance
- Town Boundary
- Cellular Tower
- Microwave Service Tower
- FCC Antenna Structure

Sources:

- Project details prepared by Burns & McDonnell, January 2025
- HIFLD, FCC Antenna/Cellular/Microwave Towers, Accessed February, 2025
- NYS GIS Data Clearinghouse
- Esri World Imagery

PROJECT TITLE

PSEG | LONG ISLAND

Commercial Avenue
Equipment Project

SHEET TITLE

Figure A-10
Effect on Communications

DATE	04/11/2025	
DRN. BY	CR/MK	
CHK. BY	SH	

FIGURE NO. A-10

PRELIMINARY - NOT FOR CONSTRUCTION